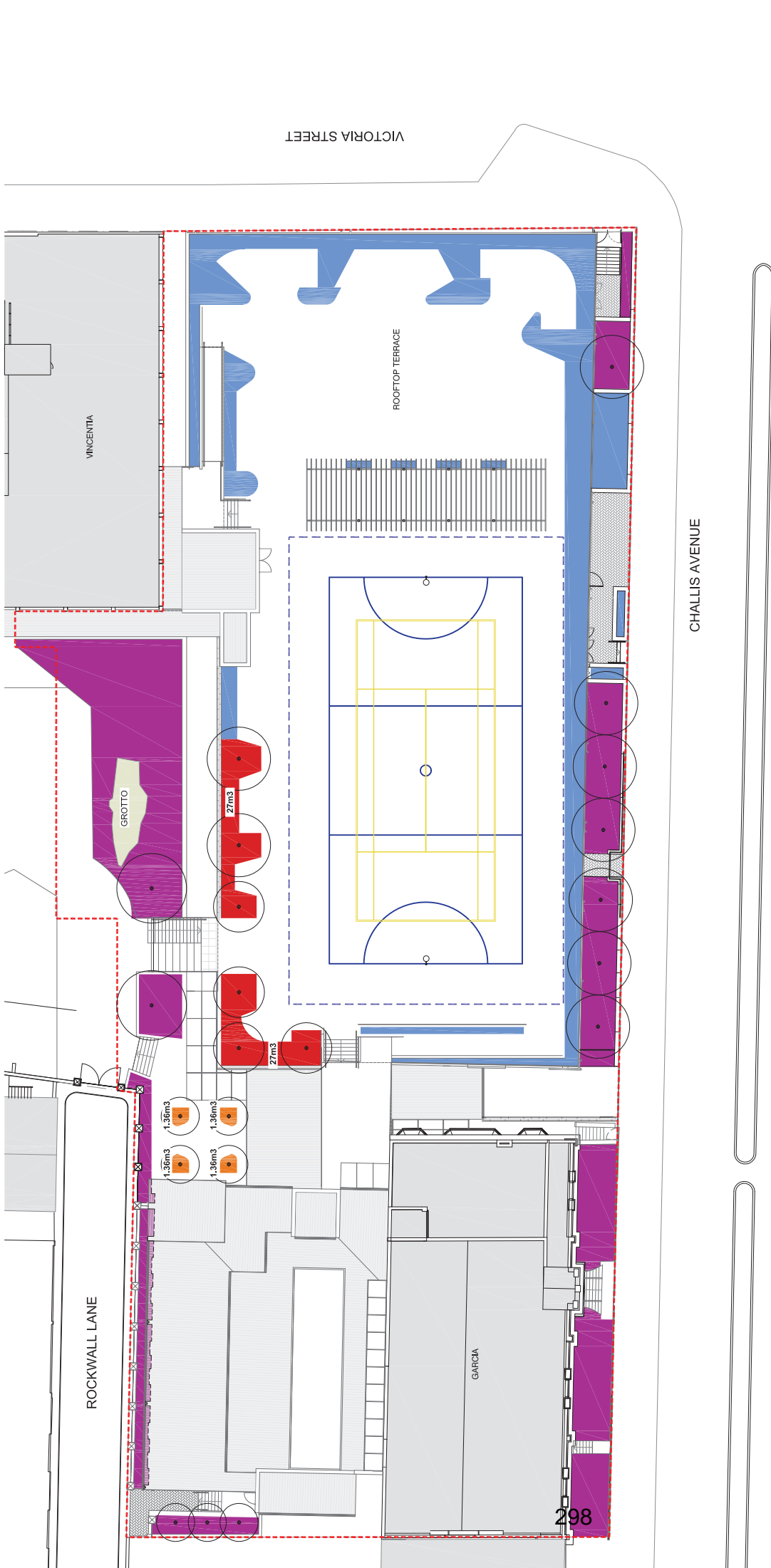


Attachment C2

Landscape Plans

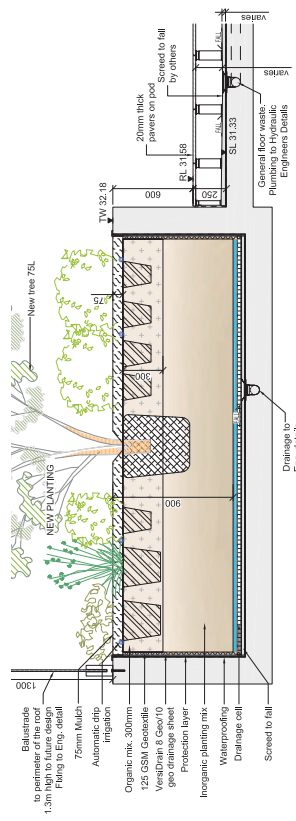


SCALE: 1:150 @ A1
 1:300 @ A3

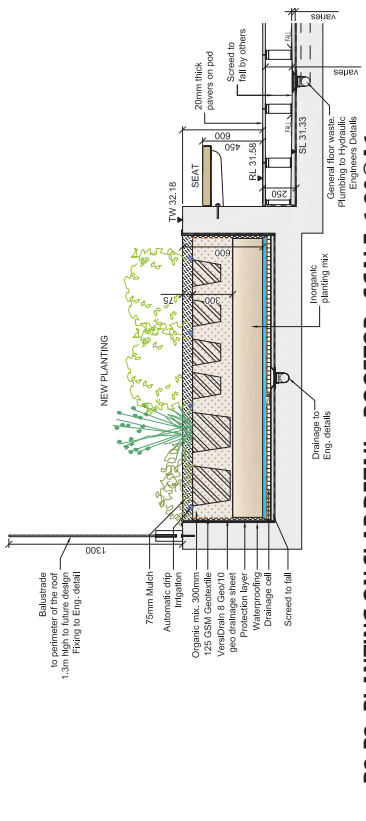
0 1.5 3m 6m 12m

TREE CANOPY CALCULATION

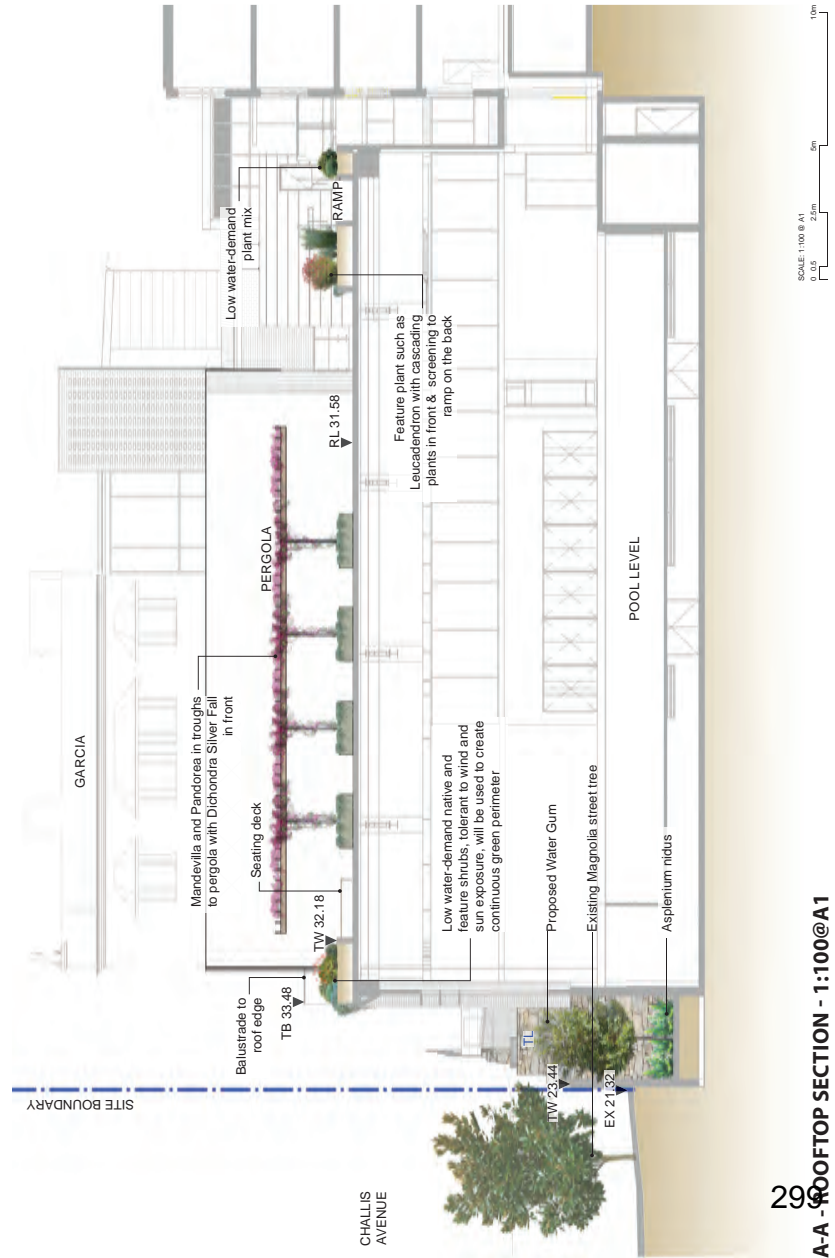
LEGEND - DEPTH OF SOIL		PROPOSED	
900mm SOIL DEPTH TO TREES ON ROOFTOP	800mm SOIL DEPTH TO TREES ON SLAB IN REFLECTION GARDEN	22 TREES PROPOSED	Canopy coverage approx. 322m ²
800mm SOIL DEPTH TO TREES ON SLAB IN REFLECTION GARDEN	800mm SOIL DEPTH TO SHRUBS ON REFLECTION GARDEN PLANTERS	EXISTING	18 TREES REMOVED / 1 RETAINED
800mm SOIL DEPTH TO SHRUBS ON REFLECTION GARDEN PLANTERS	AT GRADE DEEP SOIL		Canopy coverage approx. 344m ²
AT GRADE DEEP SOIL	EXTENT OF WORK		
TOTAL 60m ² - 9m ³ of soil for each tree			
TOTAL 7m ² - 1.36m ³ of soil for each shrub			
TOTAL 272m ²			
TOTAL 385m ²			



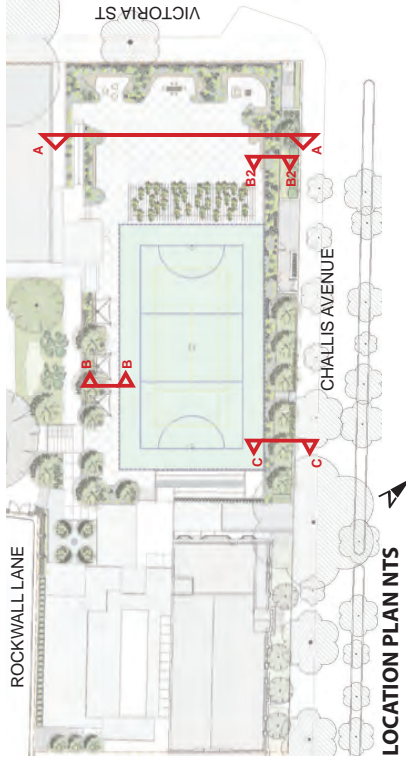
B-B - TREE ON SLAB DETAIL - ROOFTOP - SCALE: 1:20@A1



B2-B2- PLANTING ON SLAB DETAIL - ROOFTOP - SCALE: 1:20@A1



A-A - ROOFTOP SECTION - 1:100@A1



LOCATION PLANS

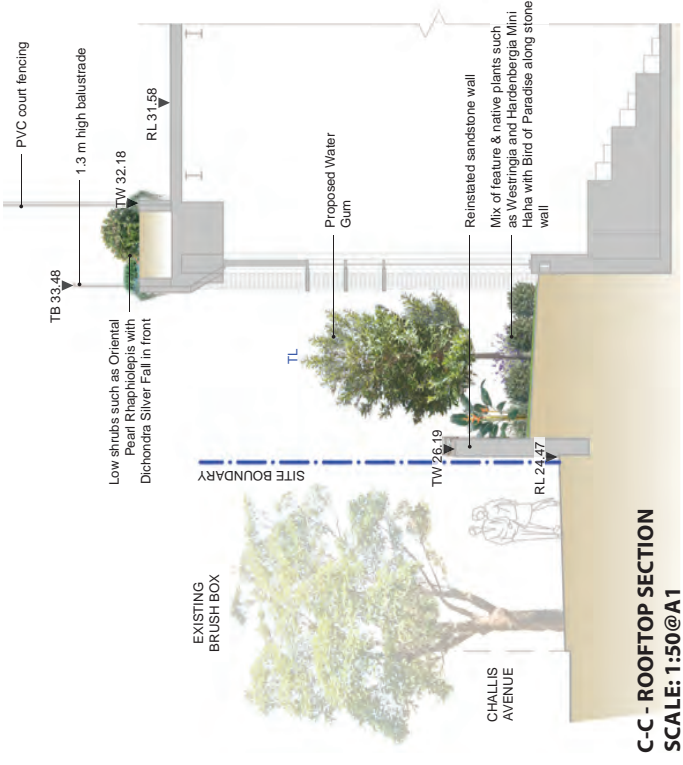


ROOFTOP MATERIAL

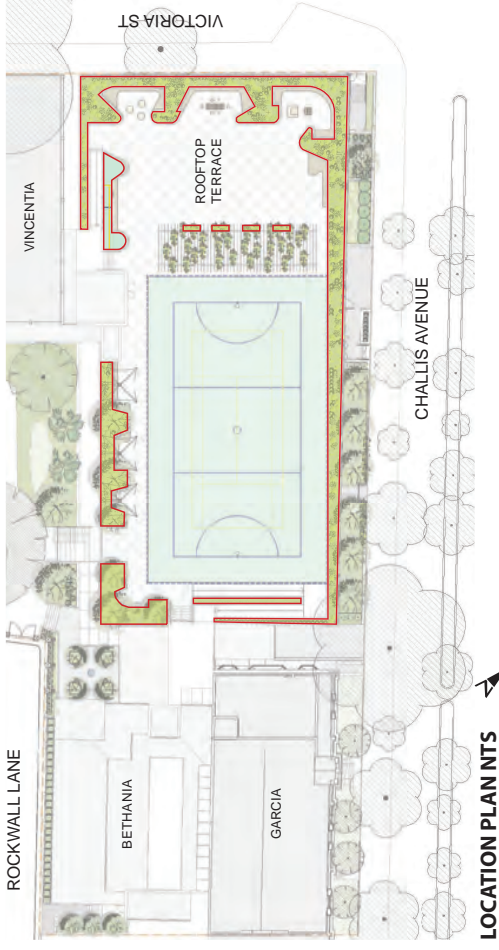
Timber seating will offer space for gathering.

Balustrade located along roof edge will facilitate easy maintenance of plants. It will be 1.3m high.

A pergola with climbing plants will embellish the rooftop and provide extra shade.



C-C - ROOFTOP SECTION SCALE: 1:50@A1

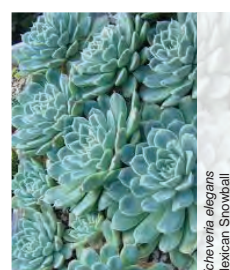
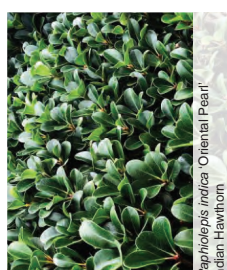
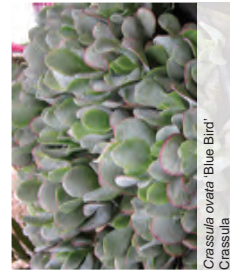
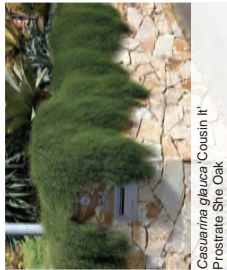


ALL GARDENS TO HAVE AUTOMATIC IRRIGATION



Botanical Name	Common Name	Size	Height (H) / Spread (S)
FEATURE TREES SMALL UP TO 6 m height			
AHL <i>Angophora hispida</i>	Dwarf Apple Gum	75 L	H8 x S5m
MIG <i>Magnolia grandiflora</i> 'Little Gem'	Little Gem Magnolia	75 L	H8 x S5m
PA <i>Platanus occidentalis</i>	Frangipani	75 L	H8 x S5m
ORNAMENTAL SHRUBS / FEATURE PLANTS			
<i>Acacia copulata</i> 'lime light'	liver wattle	200 mm	H0.3 m
<i>Angecanthus flavus</i> 'Big Orange'	Orange Kangaroo Paw	150 mm	H1 m
<i>Angecanthus flavus</i> 'Big Yellow'	Yellow Kangaroo Paw	150 mm	H1 m
<i>Banksia ericifolia</i>	Health-Leaved Banksia	200mm	H1.1m
<i>Banksia integrifolia</i> 'Prostrate'	Sasali Banksia	200mm	H0.5 m
<i>Cassia macrocarpa</i> 'Emerald Star'	Emerald Star Cassia	200mm	H0.4m
<i>Coumarina glauca</i> 'Cousin It'	Prostrate She Oak	200 mm	H0.3 m
<i>Coratopetalum gummiferum</i> 'Albury's Red'	NSW Christmas Bush	300mm	H3 m
<i>Drazena draco</i>	Dragon Tree	400mm	H3 m
<i>Grevillea rostratifolia</i> 'Crimson Wilkes'	Grevillea	150 mm	H0.2 m
<i>Leucadendron stelligerum</i> 'Harvest'	Protea Patch	200 mm	H1.1m
<i>Leucospermum cordifolium</i> 'Orange'	Snowy Pincushion	200 mm	H1m
<i>Raphiolepis indica</i> 'Oriental Pear'	Oriental Pear Indian Hawthorn	200 mm	H0.6 m
<i>Westringia fruticosa</i> 'Grey Box' / 'Mundi'	Dwarf Coastal Rosemary	200 mm	H0.3 m
GROUNDCOVERS / SUCCULENTS / CLIMBERS			
<i>Agave attenuata</i>	Agave	200mm	H1 m
<i>Coprosma glaucescens</i>	Pigface	140 mm	H0.2 m
<i>Dichondra argentea</i> 'Silver Falls'	Silver Fall Dichondra	150 mm	H0.2 m
<i>Croton ovata</i> 'Blue Bird'	Croton	200 mm	H0.5 m
<i>Croton ovata</i> var. 'Undulate'	Croton	200 mm	H0.5 m
<i>Dichondra</i> 'Silver Falls'	Silver Fall Dichondra	150 mm	H0.2 m
<i>Echeveria elegans</i>	Mexican Snowball	140mm	H0.1 m
<i>Helichrysum ammassimum</i>	Golden Buttons	150 mm	H0.3 m
<i>Lomandra confertifolia</i> 'Pallida'	Lime Turf	140 mm	H0.3 m
<i>Lomandra longifolia</i> 'Panicar'	Dwarf Lomandra	100 mm	H0.2 m
<i>Mandevilla splendens</i>	Mexican Love Vine	140 mm	climber
<i>Myoporum laetifolium</i> 'Yareena'	Creeping Boobiala	150 mm	H0.3 m
<i>Pandorea jasminoides</i>	Bower Vine	140 mm	climber
<i>Rosmarinus officinalis</i> 'Prostrate'	Prostrate Rosemary	150 mm	H0.3 m
<i>Senecio serpens</i>	Blue Chalksticks	150mm	H0.1 m

LOCATION PLANTS



GROUNDCOVERS / SUCCULENTS / CLIMBERS

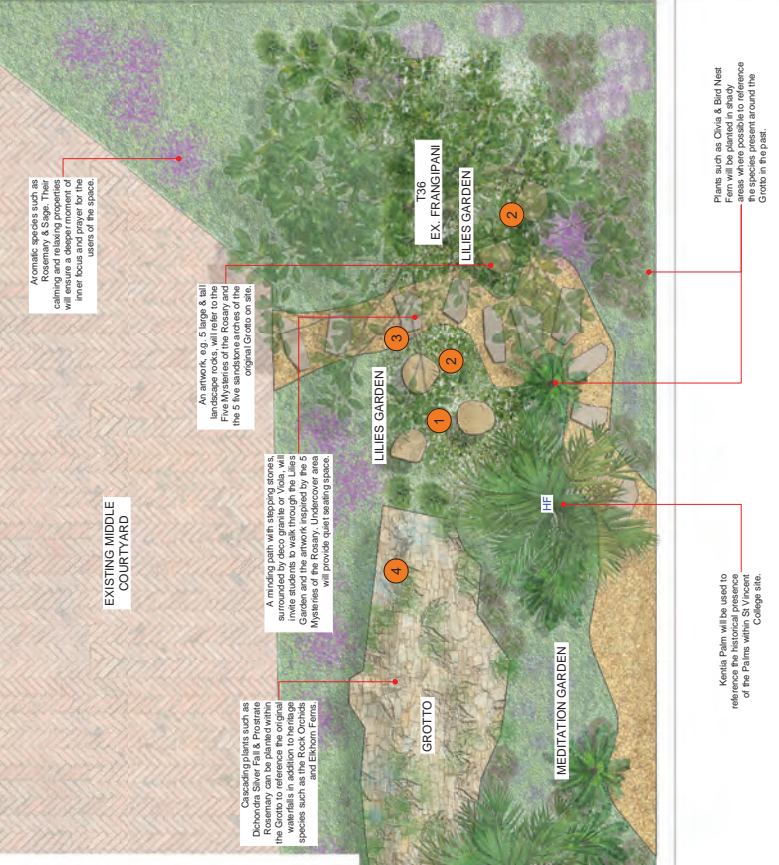
300

SHRUBS

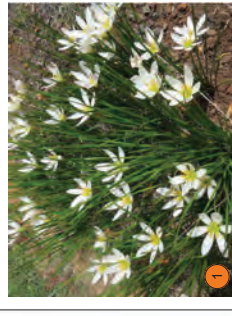
TREES

PLANT SCHEDULE - GROTTO GARDEN

Botanical Name	Common Name	Height (H) / Spread (S)
FEATURE TREES - SMALL / MEDIUM up to 15 m height		
BI <i>Banksia integrifolia</i>	Coast Banksia	H12 x S5m
HF <i>Howea forsteriana</i>	Kentia Palm	75 L
ORNAMENTAL SHRUBS / FEATURE PLANTS (up to 3 m high)		
<i>Asplenium nidus</i>	Bird's Nest Fern	200mm
<i>Blechnum album</i>	Silver Lady Fern	H0.9-1.5m
<i>Bromelads spp</i>	Bromelads spp	200mm
<i>Chorizanthe speciosa</i>	Rock Orchid	H0.5m
<i>Ullium spp</i>	Lilies species	varies
<i>Phalaenopsis aureum</i>	Blue Star Fern	200mm
<i>Rosmarinus officinalis</i>	Rosemary	H0.6m
<i>Sida nemorosa</i>	Woodland sage	200mm
GROUNDCOVERS / GRASSES		
<i>Civlia mitata</i>	Bush Lily	140 mm H0.35-0.75m
<i>Dichondra argentea</i>	Silver Fall	140 mm cascading
<i>Phytocnemum lacuratum</i>	Elkhorn Fern	140 mm
<i>Rosmarinus officinalis 'Prostratus'</i>	Prostrate Rosemary	140 mm cascading
<i>Viola heterocera</i>	Native Violet	140 mm groundcover



INSPIRATION



1 Lilies can be massplanted in the garden to create a spiritual atmosphere.



2 An artwork, e.g. made with stones, could be created to reference the 5 Mystery of the Rosary represented in the past by the 5 Grotto's arches.



3 Stepping stones with green groundcover between.



4 Rock Orchid will be used on the Grotto referring to the original grotto's planting.

GROTTO - REFERENCES IN HISTORICAL PHOTOS



1893 - Congregational Archives of the Sisters of Charity
Sandstone grotto constructed underneath the old sandstone music rooms between the two lower terraces near the lower tennis court now the swimming pool. Furnished with a marble replica of the Lourdes statue. It features five sandstone arches which symbolised the Five Mysteries of the Rosary and a 'cave space' to represent the grotto of Lourdes.
The photo shows recognizable plant species, such as small ferns and palms, the Elkhorn Fern and Rock Orchids, with some waterfalls. The new design for the Grotto could include five feature sandstone rocks, a reference to the Five Mysteries of the Rosary, which, with the help of vegetation, create a sacred space for contemplation and prayer.



1994 - Students in front of one of the Grotto archways (demolished for safety reasons). Congregational Archives of the Sisters of Charity
The photo shows a mixture of plant species including the Elkhorn Fern, Rock Orchids, Ivy and some Clivia at the front. Some heritage species will be used around the Grotto combined with other plants to achieve a contemporary look where the past meets the present.



Late 19th century - Woodcut of the north eastern end of the Victoria Street Schoolhouse. Congregational Archives of the Sisters of Charity
Bird Nest Fern at the front

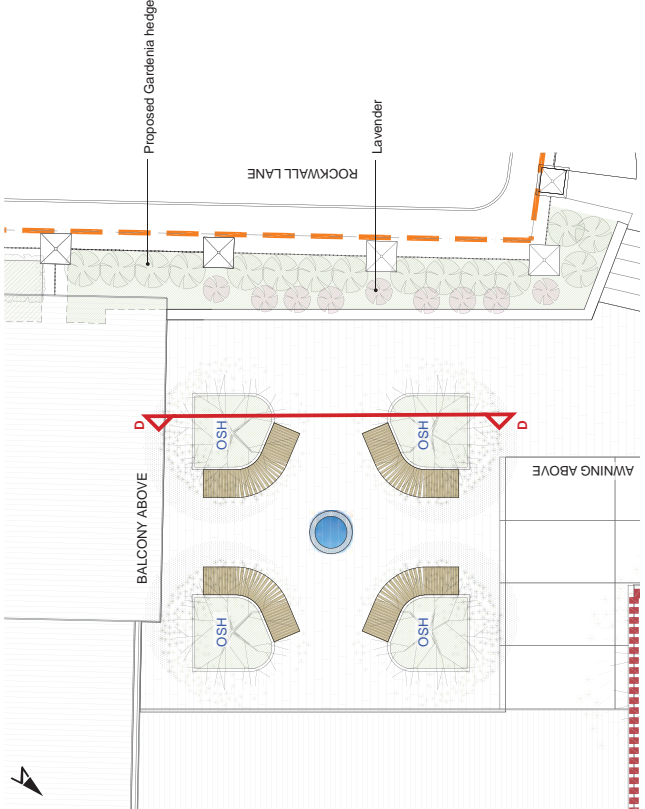


1921 - The convent garden in front of Tarmons, seen from the south eastern corner of the grounds. Congregational Archives of the Sisters of Charity
In the centre of the photo is clear the presence of a Palm. Palm species both native and exotic were common in institutional gardens in past.

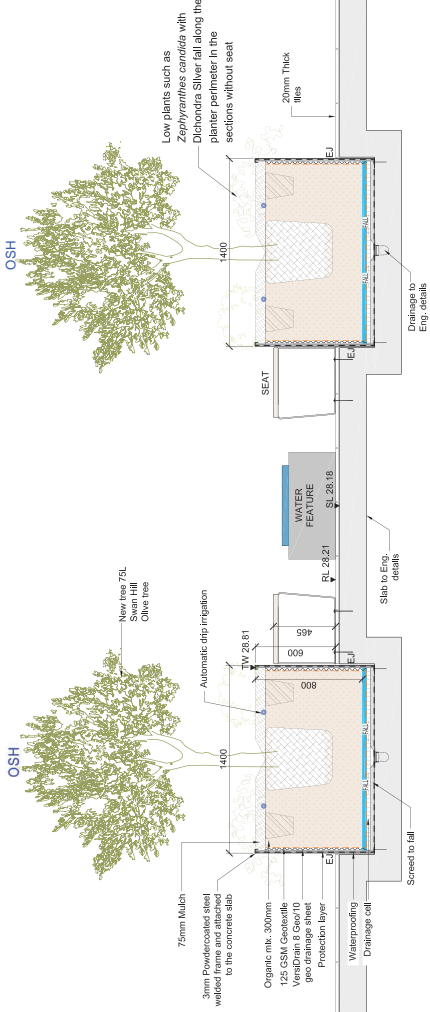
THE GROTTO GARDEN TODAY



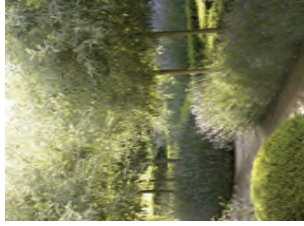
Around the Grotto, today are still present few Elkhorn Ferns and Rock Orchids which could be transplanted and re-used again. On the left is the Frangipani tree which is retained in the proposed design.



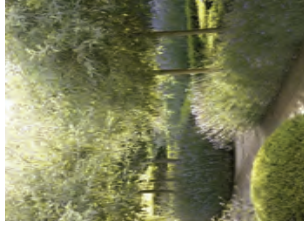
PLAN - REFLECTION GARDEN



SECTION DETAIL D-D
SCALE: 1:20 @ A1



A circular reflection pool will be the focus of this area.

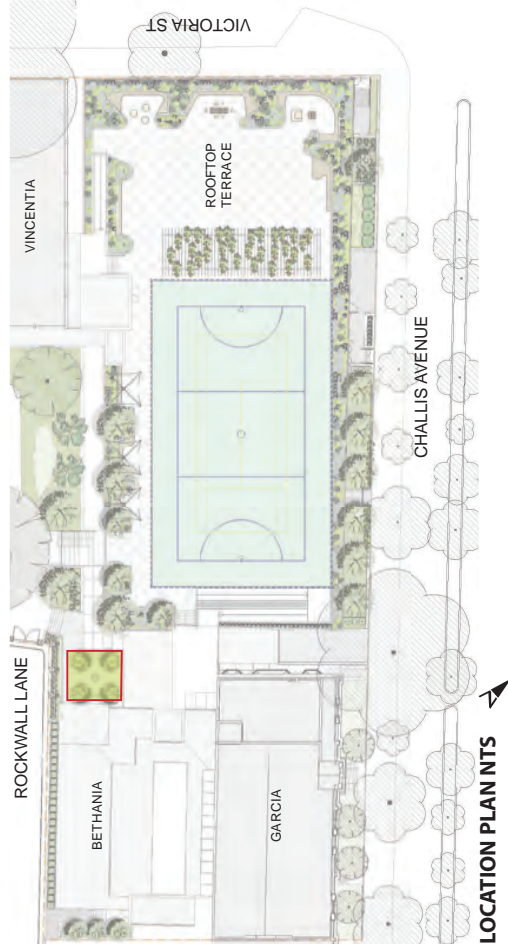


Olive trees will be in elevated planters incorporating seating.

PLANT SCHEDULE

Botanical Name	Common Name	Size	Height (H) / Spread (S)
FEATURE TREES SMALL up to 6m height			
<i>Olea europaea</i> 'Swan Hill'	Swan Hill Olive	7.5 L	H6 x S3m
ORNAMENTAL SHRUBS / FEATURE PLANTS			
<i>Gardenia augusta</i> 'Florida'	Gardenia Florida	300 mm	H1.5 m
<i>Lavandula stoechas</i> 'Aunview'	Lavender Aunview	300 mm	H0.8 m
GROUNDCOVERS			
<i>Dicentra argentea</i> 'Silver Fall'	Dicentra Silver Fall	140 mm	cascading
<i>Trachelogermum japonoides</i> 'Tricolor'	Variegated Jasmine	140 mm	H0.3 m
<i>Zephyranthes carinata</i>	Bairn Lily Lily	140 mm	H0.3 m

ALL GARDENS TO HAVE AUTOMATIC IRRIGATION



LOCATION PLAN NTS

CHALLIS AVENUE FRONTAGE



Tristaniopsis laurina 'Lucidus'
Water Gum

PLANT SCHEDULE

Botanical Name	Common Name	Size	Height (H) / Spread (S)
FEATURE TREES SMALL / MEDIUM up to 15 m height.			
<i>Tristaniopsis laurina 'Lucidus'</i>	Water Gum	7.5L	H10 x S8m
ORNAMENTAL SHRUBS / FEATURE PLANTS up to 3 m height			
<i>Asplenium nidus</i>	Birds-Nest Fern	200 mm	H0.9 m
<i>Salvia leucantha</i>	Mexican Bush Sage	200 mm	H0.8 m
<i>Streitzia reginae</i>	Bird of Paradise	200 mm	H1.5 m
<i>Westringia fraxinea 'Grey Box' / 'Mandl'</i>	Dwarf Coastal Rosemary	200 mm	H0.3 m
GROUNDCOVERS / NATIVE GRASSES			
<i>Dianella tasmanica</i>	Flax Lily	140 mm	H0.5 m
<i>Liriope muscari 'Amethyst'</i>	Liriope	140 mm	H0.3 m
<i>Lomandra longifolia 'Tanika'</i>	Dwarf Lomandra	140 mm	H0.6 m
<i>Mandevilla splendens</i>	Mexican Love Vine	140 mm	climber
<i>Myoporum parviflorum 'Variena'</i>	Creeping Boobiala	140 mm	H0.2 m
<i>Roseranina officinalis 'Prostrate'</i>	Prostrate Rosemary	140 mm	H0.3 m
<i>Trachelospermum jasminoides</i>	Star Jasmine	140 mm	climber



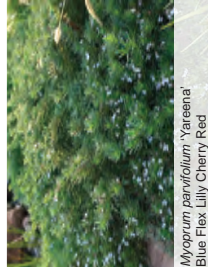
Lomandra longifolia 'Tanika'
Mat Rush



Trachelospermum jasminoides
Star Jasmine



Liriope muscari 'Amethyst'
Liriope Amethyst



Myoporum parviflorum 'Variena'
Blue Flex Lily Cherry Red



Dianella tasmanica
Flax Lily



Mandevilla splendens
Mexican Love Vine

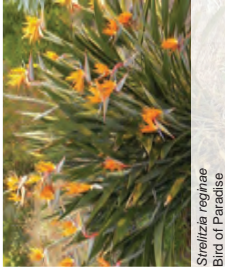


LOCATION PLAN NTS

GROUNDCOVERS / GRASSES / CLIMBERS



Westringia fraxinea 'Grey Box'
Westringia Grey Box



Streitzia reginae
Bird of Paradise

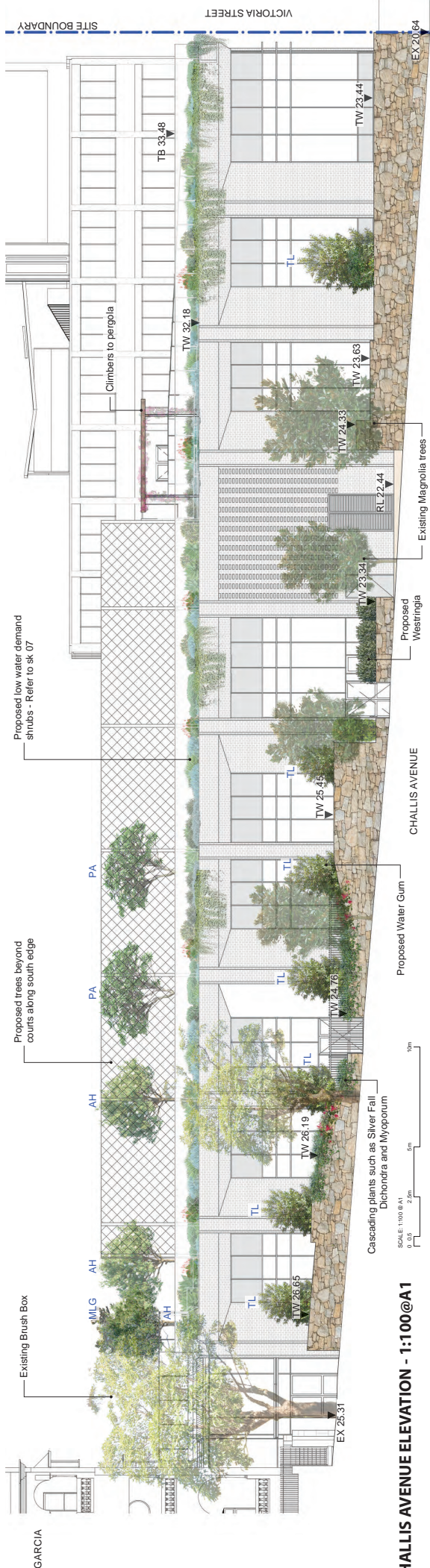


Salvia leucantha
Mexican Bush Sage



Asplenium nidus
Bird's Nest Fern

303



E-E - CHALLIS AVENUE ELEVATION - 1:100@A1



F-F - ROCKWALL LANE ELEVATION - 1:100@aA1

G-G - ROCKWALL LANE SECTION - 1:100@aA1



LOCATION PLAN



Philodendron variegatum
Dwarf Philodendron



Bechium gibbum 'Silver Lady'
Dwarf Tree Fern



Asplenium nidus
Bird's Nest Fern



Alocasia macrorrhiza
Giant Elephant Ears

Space between Camellia hedge and walls will be planted with a mixture of shade tolerant groundcovers - nice to look out from the windows of offices on the ground floor.

Camellia japonica cv is a reliable and relatively low maintenance hedge to south facing Rockwall Lane garden. It will link well to heritage narrative related to Grotto.



Eriocarpus reticulatus
Blueberry Ash



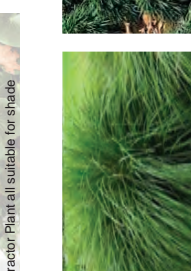
Liriope muscari 'Amethyst'
Liriope Amethyst



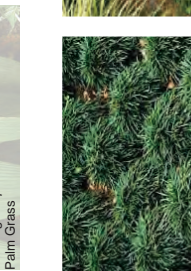
Lomandra longifolia 'Tanika'
Mat Rush



Ophiopogon japonicus
Mondo Grass



Curculigo capitulata
Palm Grass



Acaenitidis mollis
Oyster Plant



Pratia pedunculata
Trailing Pratia

Botanical Name	Common Name	Size	Height (H) / Spread (S)
FEATURE TREES/SHALL / MEDIUM up to 10 m height			
<i>Eriocarpus reticulatus</i>	Blueberry Ash	75 L	H1.0 x S5m
ORNAMENTAL SHRUBS / FEATURE PLANTS up to 2 m height			
<i>Alocasia macrorrhiza</i>	Elephant Ears	300 mm	H2.5 m
<i>Asplenium nidus</i>	Bird's Nest Fern	200 mm	H1 m
<i>Bechium gibbum 'Silver Lady'</i>	Dwarf Tree Fern	200 mm	H1 m
<i>Camellia japonica 'Pink Gold'</i>	Camellia Pink Gold	300 mm	H1.8-2.4 m
GROUNDCOVERS / CLIMBERS			
<i>Dichondra repens</i>	Dichondra	150 mm	H0.1 m
<i>Flax Lily</i>	Flax Lily	140 mm	H0.3 m
<i>Dioyalea tasmanica</i>	Creeping fig	140 mm	diameter
<i>Liriope muscari 'Amethyst'</i>	Liriope Amethyst	140 mm	H0.3 m
<i>Lomandra confertifolia 'Palais'</i>	Lime Turf	140 mm	H0.3 m
<i>Lomandra longifolia 'Tanika'</i>	Mat Rush	100 mm	H0.6 m
<i>Ophiopogon japonicus</i>	Mondo Grass	140 mm	H0.15 m
<i>Pratia pedunculata</i>	Trailing Pratia	140 mm	H0.15 m
<i>Strophanthe perflavata</i>	Madagascar Jasmine	140 mm	diameter
<i>Vibla heterocera</i>	Native Violet	150 mm	H0.1 m